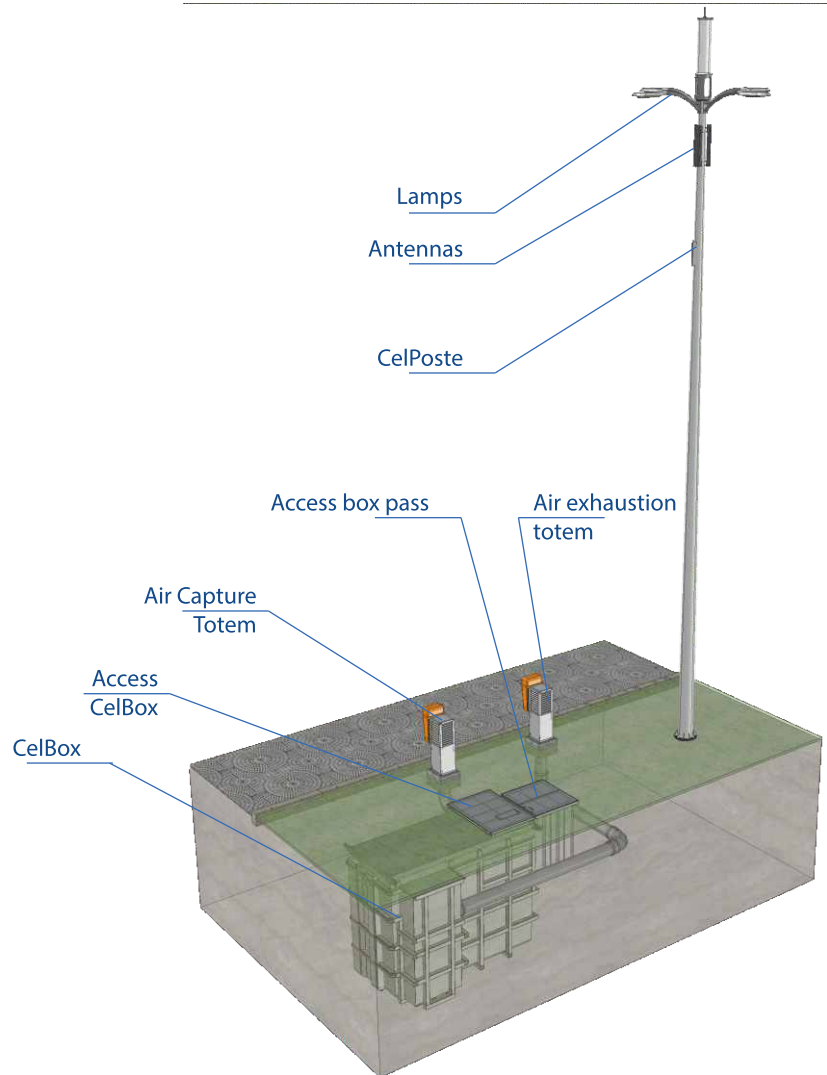


Underground and protected solution for equipment

Airtight, underground and ventilated shelter for the implantation of compact sites alongside public roads, sidewalks and squares, in order to house equipment in a discreet way without requiring large investments and demand of a useful area, reducing the visual impact caused by conventional installations. The set is protected against break-in and flooding of water.

| Dimensional and capacity | |
|------------------------------------|-----------------------------------|
| External dimensions | L-4,16 x W-1,41 x H-2,64 m |
| RRUs | up to 30 units* |
| Rack size | 40 Us |
| Total gross weight | ~4.000 kg |
| Power | |
| AC Power | 220V - 1F/2F |
| General breaker | 63 A |
| AC max. power | 17,6 kVA |
| CC availability power | 13.000 W |
| Autonomy | up to 20 batteries 12V - 170Ah |
| Cooling system | |
| Máx. Δt outside/inside | 10°C |
| Protections | |
| Resistance to hydrostatic pressure | 3.500 kg/m ² |
| Degree of protection NBR IEC 60529 | IPX8S 1mca por 5h |

* Depending on dimensions, dissipation and flexibility of assembly



Characteristics

- Easy and quick assembly
- Reduced area of occupancy
- Reducing visual impact
- Anti-flame fiber housing with non-slip inner floor
- Reinforced access cover to withstand external forces and protected with locks against improper access
- Access security through coded screws and Mul-T-Lock lock
- Entry by means of sailor's ladder
- Internal environment with ventilation and lighting appropriate to the operator, as well as sufficient height for standing work
- Dry contact alarm and status system
- Remote web monitoring (optional)
- Power distribution board and control with front cover with control and fault signals, standard socket ABNT voltage 220V
- Internal grounding of all metal parts and equipment
- 19" rack type internal cabinet for fixing equipment
- Flexible and versatile radio support for different technologies and manufacturers
- Battery bank cabinet protected with coded screws and with opening alarm
- Possibility of sharing with more operators, with individual cabinets
- Pond and flood resistant (IPX8S - NBR 60529) (1 meter water column for 5 hours on closed lid)
- Roxtec sealing modules
- Internal pumping system for emergency pumping
- Fire detection and alarm system
- High performance redundant ventilation system with 10 ° C temperature differential
- High efficiency filtration system (En1822), Gore type, with particle retention capacity and salinity up to 0.3µm
- Flexible air intake (inlet and exhaust) through camouflaged towers / totems
- Attachable enclosure and underground communication with the vertical support structure of the antennas